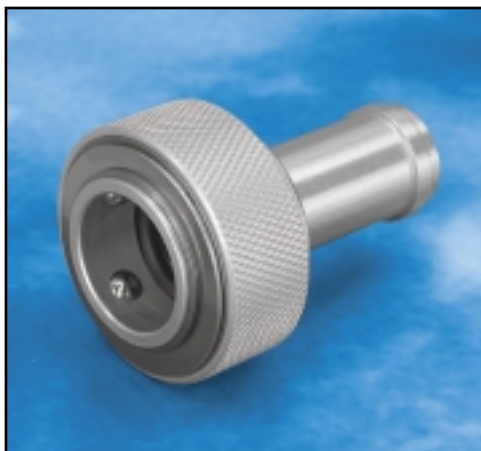


COUPLING—OPEN TYPE, TURN-TO-LOCK, STANDARD COLLAR

Notes:

- Potable water, lavatory flush/fill coupling (standard version).
- “O” Ring material:
Silicone—for potable water (stainless steel design). FDA approved.
Nitrile—for lavatory flush/fill.
- Nominal pressure rating, 150 PSIG.



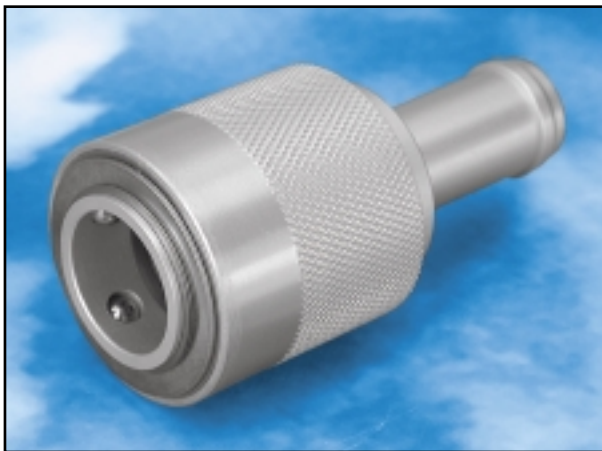
V1041J012A00 shown

AIRLINX P/N	Size	Material	Application	Specifications
V1041J008A00	-08 x -08	Aluminum alloy	Potable water/special	1/2" coupling with MS33658-8 fitting end-hose connection.
V1041J008C00	-08 x -08	Stainless steel	Potable water/special	1/2" coupling with MS33658-8 fitting end-hose connection.
V1041J012A00	-12 x -12	Aluminum alloy	Potable water	3/4" coupling with MS33658-12 fitting end-hose connection.
V1041J012C00	-12 x -12	Stainless steel	Potable water	3/4" coupling with MS33658-12 fitting end-hose connection.
V1041J012A10	-12 x -12	Aluminum alloy	Potable water	Includes V1041-012A22 plug with 4" long bead chain.
V1041J012A20	-12 x -12	Aluminum alloy	Potable water	Includes V1041-012A22 plug, GS-W400-NB drag cushion with 5 1/2" long bead chain.
V1041J016A00	-16 x -16	Aluminum alloy	Lavatory flush/fill	1" coupling with MS33658-16 fitting end-hose connection.
V1041J016A10	-16 x -16	Aluminum alloy	Lavatory flush/fill	Includes V8022-016A00 plug with 4" long bead chain.

COUPLING—OPEN TYPE, TURN-TO-LOCK, EXTENDED COLLAR

Notes:

- Potable water, lavatory flush/fill coupling (extended version).
- Material—Aluminum alloy.
- Stainless steel available.
- “O” Ring material:
Silicone—for potable water (stainless steel design). FDA approved.
Nitrile—for lavatory flush/fill.
- Nominal pressure rating, 150 PSIG.



V1041JS012A00 shown

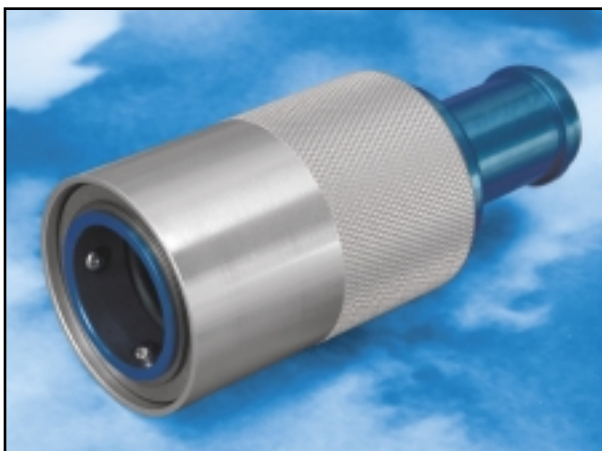
AIRLINX P/N	Size	Application	Specifications
V1041JS012A00	-12 x -12	Potable water	3/4" coupling with MS33658-12 fitting end-hose connection.
V1041JS012A10	-12 x -12	Potable water	Includes V8022-012A00 plug with 6" long coated wire rope.
V1041JS012A20	-12 x -12	Potable water	Includes V1041-012A22 plug, GS-W400-NB drag cushion with 7" long coated wire rope.
V1041JS016A00	-16 x -16	Lavatory flush/fill	1" coupling with MS33658-16 fitting end-hose connection.
V1041JS016A10	-16 x -16	Lavatory flush/fill	Includes V8022-016A00 plug with 6" long coated wire rope.

COUPLING—OPEN TYPE, TURN-TO-LOCK, LONG BARREL COLLAR

Notes:

- Potable water, lavatory flush/fill coupling (stretch version).
- Material—Aluminum alloy.
- Stainless steel available.
- “O” Ring material:
Silicone—for potable water (stainless steel design). FDA approved.
Nitrile—for lavatory flush/fill.
- Nominal pressure rating, 150 PSIG.

AIRLINX P/N	Size	Application	Specifications
V0031J12-119	-12 x -12	Potable water	3/4" coupling with MS33658-12 fitting end-hose connection.
V0031J12-119-1	-12 x -12	Potable water	Includes V8022-012A00 plug with 7" long coated wire rope.
V0031J12-119-2	-12 x -12	Potable water	Includes V1041-012A22 plug, GS-W400-NB drag cushion with 8 1/2" long coated wire rope.
V0031J16-018	-16 x -16	Lavatory flush/fill	1" coupling with MS33658-16 fitting end-hose connection.
V0031J16-018-1	-16 x -16	Lavatory flush/fill	Includes V8022-016A00 plug with 7" long coated wire rope.

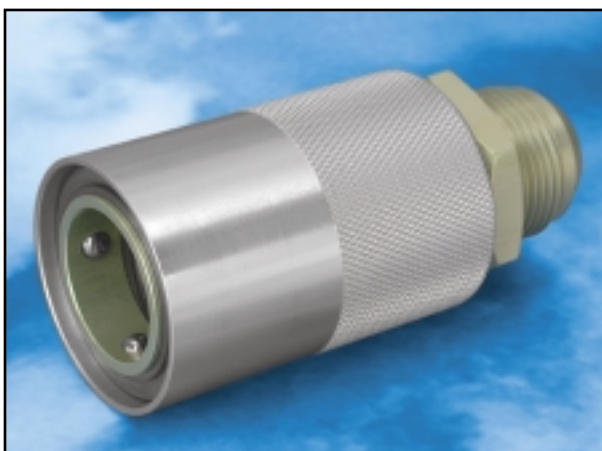


V0031J16-018 shown

COUPLING—OPEN TYPE, TURN-TO-LOCK—FOR LAVATORY FLUSH & FILL CONNECTION

Notes:

- Lavatory flush/fill coupling (long barrel collar).
- Material—Aluminum alloy.
- “O” Ring material—Nitrile.
- Nominal pressure rating, 150 PSIG.



V7785J016A00 shown

AIRLINX P/N	Size	Specifications
V7785J016A00	-16 x -16	1" coupling with MS33656-16, style “E” fitting end-thread connection.
V7785J016A10	-16 x -16	Includes V8022-016A00 plug with 7" long coated wire rope.

COUPLING—OPEN TYPE, TURN-TO-LOCK—FOR POTABLE WATER FILL CONNECTION, HOUR- GLASS COLLAR

Notes:

- Potable water fill coupling assembly (hourglass collar).
- Material—Aluminum alloy.
- “O” Ring material—Silicone. FDA approved.
- Drag cushion material—Nitrile.
- Nominal pressure rating, 150 PSIG.

AIRLINX P/N	Size	Specifications
V1041J012A20	-12 x -12	Includes V1041J012A21 coupling, V1041-012A22 plug, GS-W400-NB drag cushion with 5 1/2" long NAS1455 flat link chain.
V1041J012A21	-12 x -12	Coupling only.
V1041-012A22	-12	Plug only. Modified with hole for chain attachment.



V1041J012A20 shown



V1031J012C00 shown

COUPLING—OPEN TYPE, TURN-TO-LOCK—INTERNAL NPT CONNECTION

Notes:

- Potable water, lavatory flush/fill coupling (standard collar).
- “O” Ring material:
Silicone—for potable water (stainless steel design). FDA approved.
Nitrile—for lavatory flush/fill.
- Nominal pressure rating, 150 PSIG.

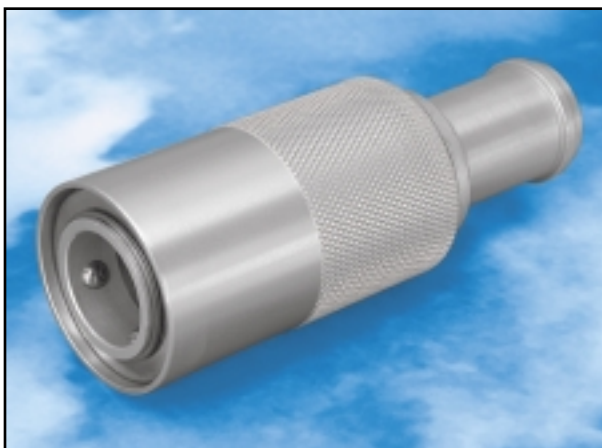
AIRLINX P/N	Size	Material	Application	Specifications
V1031J012C00	-12 x -12	Stainless steel	Potable water	3/4" coupling with internal 3/4-14 NPT fitting end.
V1031J012C10	-12 x -12	Stainless steel	Potable water	Includes V1041-012A22 plug with 4" long bead chain.
V1031J012C20	-12 x -12	Stainless steel	Potable water	Includes V1041-012A22 plug, GS-W400-NB drag cushion with 5 1/2" long bead chain.
V1031J016A00	-16 x -16	Aluminum alloy	Lavatory flush/fill	1" coupling with internal 1-11/16" NPT fitting end.
V1031J016A10	-16 x -16	Aluminum alloy	Lavatory flush/fill	Includes V8022-016A00 plug with 4" long bead chain.

COUPLING—OPEN TYPE, TURN-TO-LOCK—FOR POTABLE WATER FILL CONNECTION, SPECIAL HIGH-FLOW DESIGN

Notes:

- Potable water fill coupling (high-flow application).
- For use with 1" I.D. transfer hose.
- Design incorporates long barrel and extended collars.
- Material—Aluminum alloy.
- Stainless steel available.
- "O" Ring material:
Silicone—for potable water (stainless steel design). FDA approved.
Nitrile—for lavatory flush/fill.
- Nominal pressure rating, 150 PSIG.

AIRLINX P/N	Size	Specifications
V0031J126-119	-12 x -16	High-flow coupling, long barrel collar with a standard 3/4" aircraft connection end, terminating with a 1" MS33658-16 fitting end-hose connection.
V0031J126-119-1	-12 x -16	Includes V8022-012A00 plug with 7" long coated wire rope.
V0031J126-119-2	-12 x -16	Includes V1041-012A22 plug, GS-W400-NB drag cushion with 8 1/2" long coated wire rope.
V1041JS126A00	-12 x -16	High-flow coupling, extended collar with a standard 3/4" aircraft connection end, terminating with a 1" MS33658-16 fitting end-hose connection.
V1041JS126A10	-12 x -16	Includes V8022-012A00 plug with 6" long coated wire rope.
V1041JS126A20	-12 x -16	Includes V1041-012A22 plug, GS-W400-NB drag cushion with 7" long coated wire rope.



V0031J126-119 shown

COUPLING—SELF-SEALING TYPE, TURN-TO-LOCK—FOR POTABLE WATER FILL CONNECTION, EXTENDED COLLAR

Notes:

- Potable water fill coupling (extended version).
- Design incorporates a self-sealing "dry-break" poppet.
- Poppet eliminates ball shut-off valve.
- Material—Aluminum alloy.
- Stainless steel available.
- "O" Ring material:
Silicone—for potable water (stainless steel design). FDA approved.
Nitrile—for lavatory flush/fill.
- Nominal pressure rating, 150 PSIG.



V1303JS012A00 shown

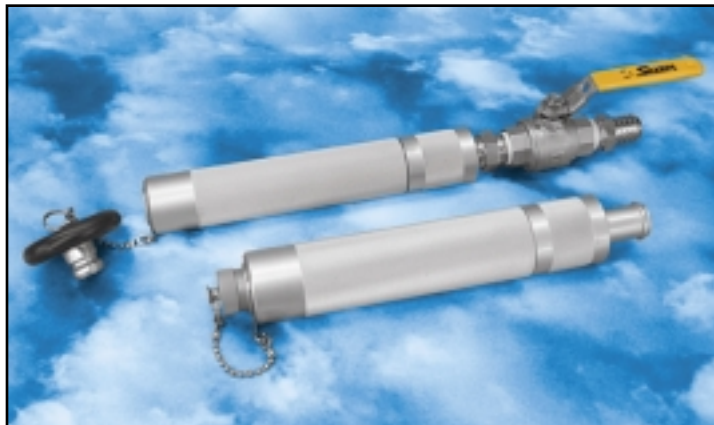
AIRLINX P/N	Size	Specifications
V1301JS012A00	-12 x -12	3/4" self-sealing coupling with poppet, 2-piece with external 3/4-14 NPT fitting end.
V1303JS012A00	-12 x -12	3/4" self-sealing coupling with poppet, 2-piece with internal 3/4-14 NPT fitting end.
V1305JS012A00	-12 x -12	3/4" self-sealing coupling with poppet, 2-piece with MS33656-12 style "E" fitting end-thread connection.
V1325JS012A00	-12 x -12	3/4" self-sealing coupling with poppet, 2-piece with MS33658-12 fitting end-hose connection.

**COUPLING—OPEN TYPE,
TURN-TO-LOCK—SUPER STRETCH
COLLAR**

Notes:

- Potable water, lavatory flush/fill coupling (super stretch version).
- Material—Aluminum alloy.
- “O” Ring material:
Silicone—for potable water.
FDA approved.
Nitrile—for lavatory flush/fill.
- Nominal pressure rating, 150 PSIG.

AIRLINX P/N	Size	Application	Specifications
V0031S12-119	-12 x -12	Potable water	3/4" coupling with MS33658-12 fitting end-hose connection.
V0031S12-119-1	-12 x -12	Potable water	Includes V1041-012A22 plug with 4" long bead chain.
V0031S12-119-2	-12 x -12	Potable water	Includes V1041-012A22 plug, GS-W400-NB drag cushion with 5 1/2" long bead chain.
V0031S12-120	-12 x -12	Potable water	3/4" coupling with internal 3/4-14 NPT fitting end.
V0031S12-120-1	-12 x -12	Potable water	Includes V1041-012A22 plug with 4" long bead chain.
V0031S12-120-2	-12 x -12	Potable water	Includes V1041-012A22 plug, GS-W400-NB drag cushion with 5 1/2" long bead chain.
V0031S12-120-3	-12 x -12	Potable water	Includes all components in the V0031S12-120-2, with a stainless steel ball shut-off valve.
V0031S16-018	-16 x -16	Lavatory flush/fill	1" coupling with MS33658-16 fitting end-hose connection.
V0031S16-018-1	-16 x -16	Lavatory flush/fill	Includes V8022-016A00 plug with 4" long bead chain.



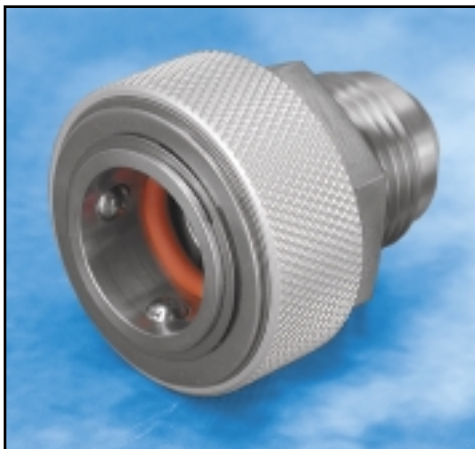
Top: V0031S12-120-3 shown. Bottom: V0031S16-018-1 shown

COUPLING—OPEN TYPE, TURN-TO-LOCK—FOR POTABLE WATER FILL CONNECTION

Notes:

- Potable water fill coupling (standard collar).
- Component materials:
Ballcage—Stainless steel.
Collar—Aluminum alloy.
“O” Ring—Silicone. FDA approved.
- All Aluminum alloy available.
- All Stainless steel available.
- Nominal pressure rating, 150 PSIG.

AIRLINX P/N	Size	Specifications
V1001AR12D00	-12 x -12	3/4" coupling with MS33656-12 style “E” fitting end—thread connection.
V1001AR12D10	-12 x -12	Includes V1041-012A22 plug with 4" long bead chain.
V1001AR12D20	-12 x -12	Includes V1041-012A22 plug, GS-W400-NB drag cushion with 5 1/2" long bead chain.



V1001AR12D00 shown

COUPLING—OPEN TYPE, TURN-TO-LOCK—EXTERNAL NPT—FOR POTABLE WATER FILL CONNECTION

Notes:

- Potable water fill coupling.
- Design incorporates long barrel and extended collars.
- Material—Aluminum alloy.
- Stainless steel available.
- “O” Ring material:
Silicone—for potable water (stainless steel design). FDA approved.
- Nitrile—for Aluminum alloy.
- Nominal pressure rating, 150 PSIG.



V1021J012A00 shown

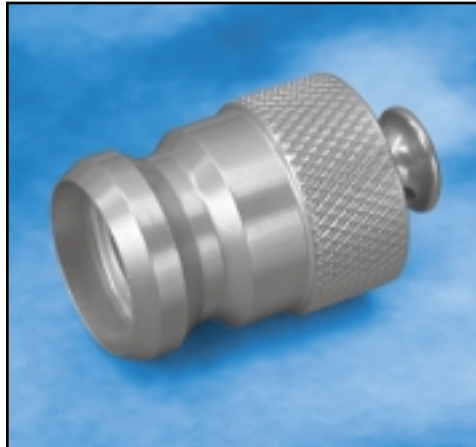
AIRLINX P/N	Size	Specifications
V1021J012A00	-12 x -12	3/4" coupling, extended collar with external 3/4-14 NPT fitting end.
V1021J012A10	-12 x -12	Includes V8022-012A00 plug with 6" long coated wire rope.
V1021J012A20	-12 x -12	Includes V1041-012A22 plug, GS-W400-NB drag cushion with 7" long coated wire rope.
V1021J12-119	-12 x -12	3/4" coupling, long barrel collar with external 3/4-14 NPT fitting end.
V1021J12-119-1	-12 x -12	Includes V8022-012A00 plug with 7" long coated wire rope.
V1021J12-119-2	-12 x -12	Includes V1041-012A22 plug, GS-W400-NB drag cushion with 8 1/2" long coated wire rope.

PLUG FOR SERVICE COUPLING

Notes:

- Potable water/lavatory service plug (standard version).
- Plug retains fluid and excludes contamination when locked into coupling during periods of non-use.
- Material—Aluminum alloy.
- Stainless steel available.

AIRLINX P/N	Size	Application	Specifications
V8022-008A00	-08	Potable water/special	For use with all 1/2" service couplings.
V8022-012A00	-12	Potable water	For use with all 3/4" potable water service couplings.
V1041-012A22	-12	Potable water	For use with all 3/4" potable water service couplings. Modified with hole for chain or wire rope attachment.
V8022-016A00	-16	Lavatory flush/fill	For use with all 1" lavatory service couplings.

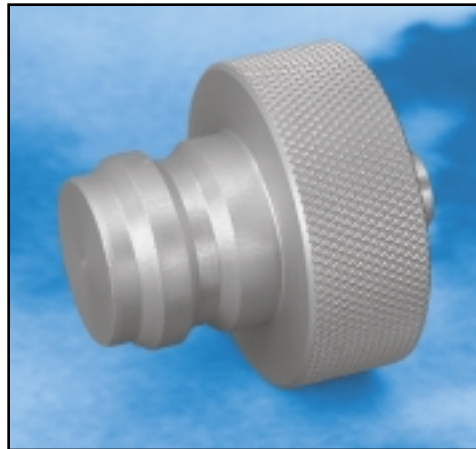


V1041-012A22 shown

PLUG FOR SERVICE COUPLING— “EASY GRIP” DESIGN

Notes:

- Potable water/lavatory service plug (easy grip version).
- Heavy-duty—solid design.
- Plug retains fluid and excludes contamination when locked into coupling during periods of non-use.
- Material—Aluminum alloy.
- Stainless steel available.



V8022-016A10 shown

AIRLINX P/N	Size	Application	Specifications
V8022-012A10	-12	Potable water	For use with all 3/4" potable water service couplings. Hole provided for chain or wire rope attachment.
V8022-016A10	-16	Lavatory flush/fill	For use with all 1" lavatory service couplings. Hole provided for chain or wire rope attachment.

POTABLE WATER DRAG CUSHION

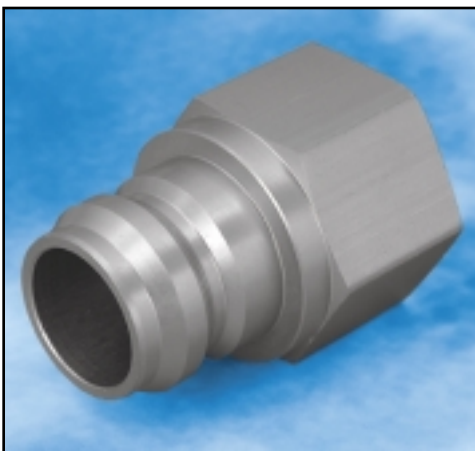
Notes:

- Standard on V1041J012A20 coupling assembly.
- Adaptable to potable water service plugs.
- Material—Nitrile.

AIRLINX P/N	Size	Specifications
GS-W400-NB	-12	For use with V1041-012A22 modified plug. Designed to extend coupling life by preventing coupling contact with the ramp.
V1041-012A10	-12	Includes GS-W400-NB drag cushion, and V1041-012A22 plug.
V1041-012A20	-12	Includes GS-W400-NB drag cushion, V1041-012A22 plug, 990-0028-101 split ring, and 12" long coated wire rope/oval sleeve assembly for connection to service coupling.



GS-W400-NB shown



V1032-012A00 shown

NIPPLE INSTALLATION—OPEN TYPE, INTERNAL NPT CONNECTION—1-PIECE

Notes:

- Potable water, lavatory flush/fill service nipple.
- Mates and seals with all industry standard couplings and caps.
- Nominal pressure rating, 100 PSIG.

AIRLINX P/N	Size	Material	Application	Specifications
V1032-012A00	-12	Aluminum alloy	Potable water	3/4" fill nipple with internal 3/4-14 NPT fitting end. For use on ground support service truck/cart.
V1032-012C00	-12	Stainless steel	Potable water	3/4" fill nipple with internal 3/4-14 NPT fitting end. For use on ground support service truck/cart.
V1032-016A00	-16	Aluminum alloy	Lavatory flush/fill	1" fill nipple with internal 1-11½ NPT fitting end. For use on ground support service truck/cart.
V1032-016C00	-16	Stainless steel	Lavatory flush/fill	1" fill nipple with internal 1-11½ NPT fitting end. For use on ground support service truck/cart.

NIPPLE INSTALLATION—OPEN TYPE, EXTERNAL NPT CONNECTION—FOR FILL SERVICE PANEL—1-PIECE

Notes:

- Potable water, lavatory flush/fill service nipple.
- Mates and seals with all industry standard couplings and caps.
- Material—Aluminum alloy.
- Stainless steel available.
- Nominal pressure rating, 0-100 PSIG.

AIRLINX P/N	Size	Application	Specifications
V1022-008A00	-08 x -08	Potable water/special	1/2" fill nipple with external 1/2-14 NPT fitting end. For use on aircraft or ground support service truck/cart.
V1022-012A00	-12 x -12	Potable water	3/4" fill nipple with external 3/4-14 NPT fitting end. For use on aircraft or ground support service truck/cart.
V1022-016A00	-16 x -16	Lavatory flush/fill	1" fill nipple with external 1-11½ NPT fitting end. For use on aircraft or ground support service truck/cart.



V1022-012C00 shown



V1012-012A00 shown

NIPPLE INSTALLATION—OPEN TYPE—FOR FILL SERVICE PANEL, BOSS MOUNTED—1-PIECE

Notes:

- Potable water, lavatory flush/fill service nipple.
- Mates and seals with all industry standard couplings and caps.
- Material—Aluminum alloy.
- Stainless steel available.
- Nominal pressure rating, 0-100 PSIG.

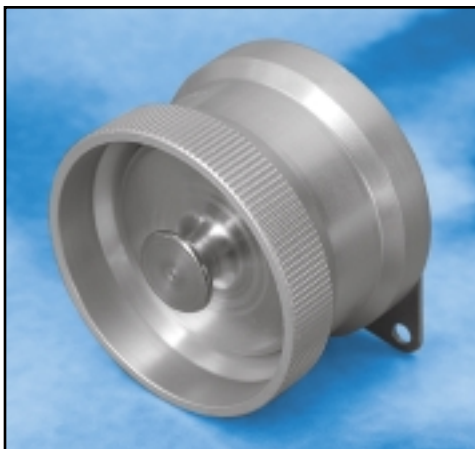
AIRLINX P/N	Size	Application	Specifications
V1012-008A00	-08 x -08	Potable water/special	1/2" fill nipple with MS33656-8 style "E" fitting end-thread connection. For use on aircraft or ground support service truck/cart.
V1012-012A00	-12 x -12	Potable water	3/4" fill nipple with MS33656-12 style "E" fitting end-thread connection. For use on aircraft or ground support service truck/cart.
V1012-016A00	-16 x -16	Lavatory flush/fill	1" fill nipple with MS33656-16 style "E" fitting end-thread connection. For use on aircraft or ground support service truck/cart.

CAP—TURN-TO-LOCK— FOR POTABLE WATER FILL NIPPLE, HOURLASS COLLAR

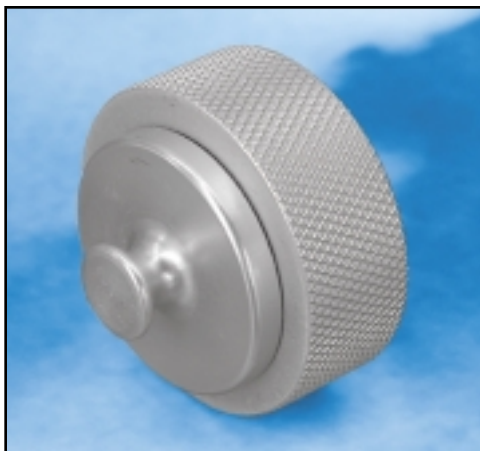
Notes:

- Potable water fill cap.
- “O” Ring material—Silicone.
FDA approved.
- Washer incorporates a .125 diameter
hole for attachment of chain or wire
rope assembly.
- Nominal pressure rating, 150 PSIG.

AIRLINX P/N	Size	Material	Specifications
V9541AR12A00	-12	Aluminum alloy	3/4" fill cap. Used to cap aircraft potable water fill nipple or ground support truck/cart potable water fill port.
V9541AR12C00	-12	Stainless steel ballcage	3/4" fill cap. Used to cap aircraft potable water fill nipple or ground support truck/cart potable water fill port.



V9541AR12C00 shown



V1400J012A00 shown

CAP—TURN-TO-LOCK— FOR FILL NIPPLE, STANDARD COLLAR

Notes:

- Potable water, lavatory flush/fill cap.
- “O” Ring material:
Silicone—for potable water (stainless
steel design). FDA approved.
Nitrile—for lavatory service.
- Nominal pressure rating, 150 PSIG.

AIRLINX P/N	Size	Material	Application	Specifications
V1400J008A00	-08	Aluminum alloy	Potable water/ special	1/2" basic fill cap assembly.
V1400J008C00	-08	Stainless steel ballcage	Potable water/ special	Same as V1400J008A00 except with stainless steel ballcage.
V1400J012A00	-12	Aluminum alloy	Potable water	3/4" basic fill cap assembly. Used to cap aircraft potable water fill nipple or ground support truck/cart potable water fill port.
V1400J012A01	-12	Aluminum alloy	Potable water	Includes 8" long bead chain with anchor link*.
V1400J012A02	-12	Aluminum alloy	Potable water	Includes 12" long coated wire rope with MS20668 stainless steel eye.
V1400J012AC1	-12	Aluminum alloy	Potable water	Includes 4 1/2" long bead chain with NAS1201 stainless steel eye.
V1400J012C01	-12	Stainless steel ballcage	Potable water	Same as V1400J012A00 except with stainless steel ballcage.
V1400J016A00	-16	Aluminum alloy	Lavatory flush/fill	1" basic fill cap assembly. Used to cap aircraft lavatory service fill nipple or ground support truck/cart lavatory service fill port.
V1400J016C01	-16	Stainless steel ballcage	Lavatory flush/fill	Same as V1400J016A00 except with stainless steel ballcage.
V1400J016A01	-16	Aluminum alloy	Lavatory flush/fill	Includes 8" long bead chain with anchor link*.
V1400J016A02	-16	Aluminum alloy	Lavatory flush/fill	Includes 12" long coated wire rope with MS20668 stainless steel eye.

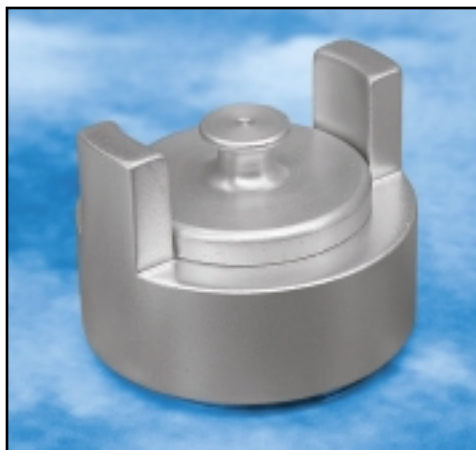
*Anchor link conforms to Boeing specification BACC19B2, anchors in .250 diameter hole through a .062 thick panel.

CAP—TURN-TO-LOCK— FOR FILL NIPPLE, TANG COLLAR

Notes:

- Potable water, lavatory flush/fill cap.
- “O” Ring material:
Silicone—for potable water (stainless steel design). FDA approved.
Nitrile—for lavatory service.
- Nominal pressure rating, 150 PSIG.

AIRLINX P/N	Size	Material	Application	Specifications
V9092J012A00	-12	Aluminum alloy	Potable water	3/4" fill cap. Used to cap aircraft potable water fill nipple or ground support truck/cart potable water fill port.
V9092J012C00	-12	Stainless steel ballcage	Potable water	3/4" fill cap. Used to cap aircraft potable water fill nipple or ground support truck/cart potable water fill port.
V9092J016A00	-16	Aluminum alloy	Lavatory flush/fill	1" fill cap. Used to cap aircraft lavatory service fill nipple or ground support truck/cart lavatory service fill port.



V9092J012A00 shown



V0016BM16A02 shown

CAP—LEVER OPERATED— FOR FILL NIPPLE, LEVER BALL-LOCK

Notes:

- Potable water, lavatory flush/fill cap.
- Component materials:
Ballcage—Aluminum alloy.
Collar and lever—Stainless steel.
- “O” Ring material:
Silicone—for potable water.
FDA approved.
Nitrile—for lavatory service.
- Nominal pressure rating, 150 PSIG.

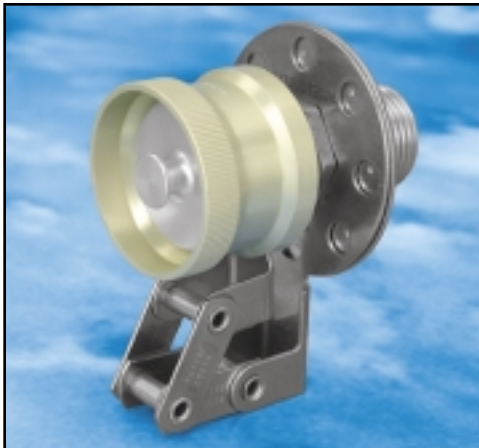
AIRLINX P/N	Size	Application	Specifications
V0016BM12A02	-12	Potable water	3/4" basic fill cap assembly. Used to cap aircraft potable water fill nipple or ground support truck/cart potable water fill port.
V0016BM12A15	-12	Potable water	Includes 2" long bead chain with NAS1201 type "A" coupling.
V0016BM12A16	-12	Potable water	Includes 5" long bead chain with NAS1201 type "A" coupling.
V0016BM12A17	-12	Potable water	Includes 4" long bead chain with NAS1201 type "A" coupling.
V0016BM12A18	-12	Potable water	Includes 6" long bead chain with NAS1201 type "A" coupling.
V0016A013*	-12	Potable water	Includes 15.2 cm long coated wire rope with 4.9 mm diameter eyelet fitting ends.
V0016BM16A02	-16	Lavatory flush/fill	1" basic fill cap assembly. Used to cap aircraft lavatory service fill nipple or ground support truck/cart lavatory service fill port.
V0016BM16A21	-16	Lavatory flush/fill	Includes 6" long bead chain with NAS1201 type "A" coupling.
V0016A014*	-16	Lavatory flush/fill	Includes 15.2 cm long coated wire rope with 4.9 mm diameter eyelet fitting ends.

*Metric

NIPPLE & CAP INSTALLATION FOR POTABLE WATER FILL PANEL, 2-PIECE

Notes:

- For Boeing 767 potable water fill panel installation.
- Component materials:
Ballcage and cap—Aluminum alloy.
Flange/fitting and nipple—Stainless steel.
“O” Ring—Silicone. FDA approved.
- Nominal pressure rating, 0-100 PSIG.



V4739J012C20 shown

AIRLINX P/N	Size	Specifications
V4739J012C20	-12 x -12	Includes the following components: V4739J012C21 heli-arc welded flange/fitting assembly (includes V4739J012C09 nipple), and V4739J012C26 cap/bracket assembly. MS33514-12 fitting end-thread connection.
V4739J012C30	-12 x -12	Includes the following components: V4739J012C22 heli-arc welded flange/fitting assembly (includes V4739J012C09 nipple), and V4739J012C26 cap/bracket assembly. MS33514-12 fitting end-thread connection.
V4739J012C21	-12 x -12	Flange/fitting/nipple assembly for V4739J012C20. MS33514-12 fitting end-thread connection.
V4739J012C22	-12 x -12	Flange/fitting/nipple assembly for V4739J012C30. MS33514-12 fitting end-thread connection.
V4739J012C09	-12	Replacement nipple for V4739J012C21 and V4739J012C22 flange/fitting assembly.
V4739J012C26	-12	Cap/bracket for use on V4739J012C21 and V4739J012C22 flange/fitting/nipple assembly. Includes hinged mounting bracket and V9541AR12A00 hourglass cap.

NIPPLE & CAP INSTALLATION FOR POTABLE WATER FILL PANEL, 2-PIECE

Notes:

- For aircraft potable water fill panel installation.
- Component materials:
Ballcage and cap—Aluminum alloy.
Flange/fitting and nipple—Stainless steel.
“O” Ring—Silicone. FDA approved.
- Nominal pressure rating, 0-100 PSIG.



V4739J012C16 shown

AIRLINX P/N	Size	Specifications
V4739J012C16	-12 x -16	Includes the following components: 190-2005-071* heli-arc welded flange/fitting assembly, V4739J012C09 nipple and V9541AR12A00 cap assembly with chain. MS33514-16 fitting end-thread connection.
V4739J012C09	-12	Replacement nipple for V4739J012C16 assembly.

*Part number 190-2005-071 not a saleable component.

COUPLING—OPEN TYPE, TURN-TO-LOCK—FOR LAVATORY DRAIN CONNECTION

Notes:

- Lavatory drain coupling (straight).
- Material—Cast aluminum alloy.
- Seal—Nitrile.
- A travel stop feature controls collar rotation and prevents any overriding of the locking balls.
- Nominal pressure rating, 0-5 PSIG.
- Overhaul manual VIM 2651.

AIRLINX P/N	Size	Application	Specifications
V2653J001P00	-64 x -64	Lavatory drain	Mates and seals with all lavatory drain nipples. Cast aluminum ballcage and collar. Fitting end-hose connection accepts standard 4" lavatory drain hose.



V2653J001P00 shown

COUPLING—OPEN TYPE, TURN-TO-LOCK—FOR LAVATORY DRAIN CONNECTION, COMPOSITE DESIGN

Notes:

- Lavatory drain coupling (straight).
- Component materials:
Ballcage—Composite/Aluminum alloy.
Collar—Composite.
Seal—Nitrile.
- A travel stop feature controls collar rotation and prevents any overriding of the locking balls.
- Nominal pressure rating, 0-5 PSIG.
- Overhaul manual VIM 2651.



V2653J001P10 shown

AIRLINX P/N	Size	Application	Specifications
V2653J001P10	-64 x -64	Lavatory drain	Mates and seals with all lavatory drain nipples. Composite collar with cast aluminum 1-piece ballcage. Fitting end-hose connection accepts standard 4" lavatory drain hose.
V2653J001P20	-64 x -64	Lavatory drain	Mates and seals with all lavatory drain nipples. Composite collar with aluminum alloy/composite 2-piece ballcage. Fitting end-hose connection accepts standard 4" lavatory drain hose.

BLOCKAGE REMOVAL COUPLING— OPEN TYPE, TURN-TO-LOCK—FOR LAVATORY DRAIN CONNECTION

Notes:

- Lavatory drain coupling (straight).
- Component materials:
 Ballcage—Aluminum alloy.
 Collar—Cast aluminum alloy.
 Seal—Nitrile.
- A travel stop feature controls collar rotation and prevents any overriding of the locking balls.
- Standard 1/4" air plug and manual shut-off ball valve for air connection.
- Optional: size -64 nipple-to-hose connection (P/N: V2651J015A00).
- Nominal pressure rating, 0-5 PSIG.

AIRLINX P/N	Size	Application	Specifications
V2653J015A00	-64 x -64	Lavatory drain/ vacuum	Mates and seals with all lavatory drain nipples. Fitting end-hose connection accepts standard 4" lavatory drain hose.
V2651J015A00	-64 x -64	Lavatory drain/ vacuum	Nipple mates and seals with all lavatory drain couplings. Fitting end-hose connection accepts standard 4" lavatory drain hose.



V2653J015A00 shown

BLOCKAGE REMOVAL COUPLING— OPEN TYPE, TURN-TO-LOCK—FOR LAVATORY DRAIN CONNECTION, COMPOSITE DESIGN

Notes:

- Lavatory drain coupling (straight).
- Component materials:
 Ballcage—Aluminum alloy.
 Collar—Composite.
 Seal—Nitrile.
- A travel stop feature controls collar rotation and prevents any overriding of the locking balls.
- Standard 1/4" air plug and manual shut-off ball valve for air connection.
- Optional: size -64 nipple-to-hose connection (P/N: V2651J015A00).
- Nominal pressure rating, 0-5 PSIG.



V2653J015A10 shown

AIRLINX P/N	Size	Application	Specifications
V2653J015A10	-64 x -64	Lavatory drain/ vacuum	Mates and seals with all lavatory drain nipples. Incorporates a composite collar. Fitting end-hose connection accepts standard 4" lavatory drain hose.
V2651J015A00	-64 x -64	Lavatory drain/ vacuum	Nipple mates and seals with all lavatory drain couplings. Fitting end-hose connection accepts standard 4" lavatory drain hose.

“WYE” COUPLING—OPEN TYPE, TURN-TO-LOCK— FOR LAVATORY DRAIN CONNECTION AND PLUG EXTRACTION—SIZE -64 OUTLET

Notes:

- Lavatory drain coupling (“WYE”).
- The “WYE” drain coupling provides the means for extracting the lavatory drain plug from the lavatory drain nipple.
- Component materials:
Body—molded ABS plastic/coated 2-ply polyurethane.
Collar—Cast aluminum alloy or composite.
Shaft—Stainless steel.
- A travel stop feature controls collar rotation and prevents any overriding of the locking balls.
- Easily repairable (overhaul kit AIRLINX P/N V2651-999P01).
- Overhaul manual VIM 2651.

AIRLINX P/N	Material	Specifications
V2651J206P01	ABS/cast aluminum alloy	Mates and seals with all lavatory drain nipples. Fitting end-hose outlet accepts standard 4" lavatory drain hose.
V2651J133P01	ABS/cast aluminum alloy	Mates and seals with all lavatory drain nipples. Size -64 stainless steel nipple outlet accepts V2653 style, straight open coupling for lavatory drain hose connection.
V2651J206P10	Coated 2-ply polyurethane/composite	Mates and seals with all lavatory drain nipples. Fitting end-hose outlet accepts standard 4" lavatory drain hose.
V2651J133P10	Coated 2-ply polyurethane/composite	Mates and seals with all lavatory drain nipples. Size -64 stainless steel nipple outlet accepts V2653 style, straight open coupling for lavatory drain hose connection.

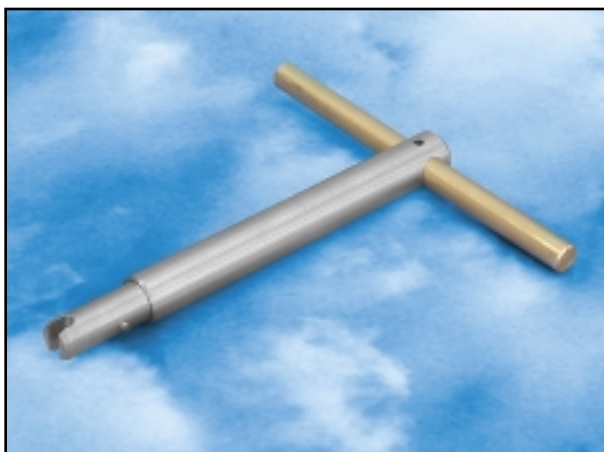


Top: V2651J133P10 shown. Bottom: V2651J206P10 shown

“T” HANDLE FOR LAVATORY DRAIN PLUG EXTRACTION

Notes:

- 6" shaft, 4" “T” style handle.
- Component materials:
Shaft—Stainless steel.
“T” handle—Steel.
- Used to remove/install drain plug when lavatory “WYE” drain connection/fluid drainage is not required, or where accessibility is limited.



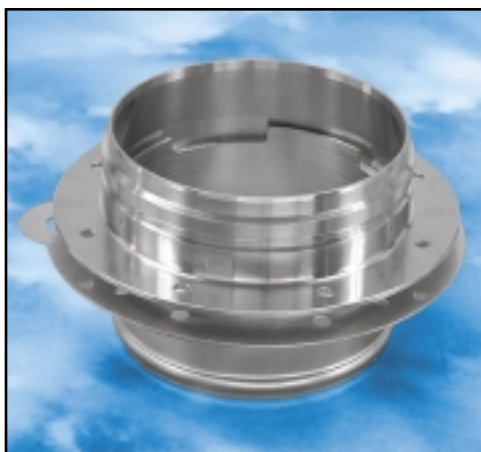
V2651-T-001 shown

AIRLINX P/N	Application	Specifications
V2651-T-001	Lavatory drain	Not for use when lavatory drain fluid is to be extracted.

LAVATORY DRAIN NIPPLE INSTALLATION FOR LAVATORY DRAIN PANEL, 2-PIECE, SIZE -64

Notes:

- For aircraft lavatory service panel installation.
- Component materials:
Flange/tube assembly—(welded)
Stainless steel.
Nipple—Stainless steel.
“O” Ring—Silicone. FDA approved.
- Nominal pressure rating, 0-25 PSIG
(0-1.75 kg/cm² Metric).



V2651-216C00 shown

PLUG—LAVATORY DRAIN—SIZE -64

Notes:

- Lavatory service drain plug.
- Mates and seals in size -64 lavatory drain nipples.
- Component materials:
Operating mechanism components—
Stainless steel.
Seal—Nitrile.
- Operating pressure (locked) 0-10 PSIG,
proof test 25 PSIG.
- Overhaul manual VIM 4259.

Patent No.: 4,100,629

AIRLINX P/N	Component	Specifications
V2651-216C00	Complete drain nipple installation assembly	Includes the following components: V2651-216C01 front half nipple, V2651-216C02 back half, heli-arc welded flange/tube assembly, and 164-0008-045 silicone “O” ring. Fitting end-hose connection accepts standard 4” lavatory drain hose.
V2651-216C01	Replaceable nipple	Nipple connection compatible with all standard 4” lavatory drain couplings.
V2651-216C02	Back tube/flange assembly	Flange contains 10-32 self-locking clinch nuts-8 places with .190 diameter holes for attachment rivets- 4 places. Flange contains .50 diameter hole for electrical connector to heater pad (45° from rivet hole). Fitting end-hose connection accepts standard 4” lavatory drain hose.
V2651-216C10	Complete drain nipple installation assembly	Includes the following components: V2651-216C01 front half nipple, V2651-216C11 back half, heli-arc welded flange/tube assembly, and 164-0008-045 silicone “O” ring. Fitting end-hose connection accepts standard 4” lavatory drain hose.
V2651-216C01	Replaceable nipple	Nipple connection compatible with all standard 4” lavatory drain couplings.
V2651-216C11	Back tube/flange assembly	Flange contains 10-32 self-locking nuts with spotwelded retainer shells-8 places with .190 diameter holes for attachment rivets-4 places. Flange contains .50 diameter hole for electrical connector to heater pad (45° from rivet hole). Fitting end-hose connection accepts standard 4” lavatory drain hose.
164-0008-045	“O” Ring	Interfacing silicone “O” ring between V2651-216C01 front half nipple and V2651-216C02/C11 back half flange/tube assembly.



V4259J064S20 shown

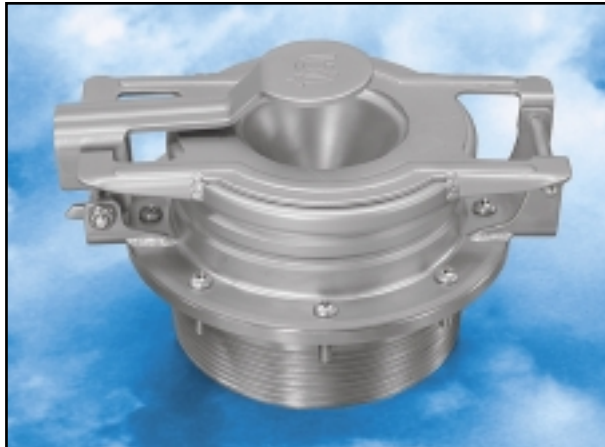
AIRLINX P/N	Size	Specifications
V4259J064S20	-64	Lock pins project through top plate holes when plug is in the locked position (visual tell-tale assuring positive plug seal).
V4259J064S21	-64	Boeing approved. Lock pins project through top plate holes when plug is in the locked position (visual tell-tale assuring positive plug seal).

NIPPLE & CAP INSTALLATION FOR LAVATORY TRUCK/CART WASTE DRAIN CONNECTION, 2-PIECE

Notes:

- Lavatory service drain nipple/cap assembly.
- Material—Stainless steel.
- Cap seal—Nitrile. Dual action cap seal contacts both the face, as well as the outside end diameter of the service nipple.
- Use with standard “WYE” or straight drain coupling.
- For use on closed airport lavatory drain systems.
- Lavatory drain plug V4259J064S20 or V4259J064S21 is recommended for maximum seal.
- Universal mounting. Can be clocked in 16 different positions.

AIRLINX P/N	Size	Application	Specifications
V2651D516L01	-64	Lavatory drain	Nipple mates and seals with all lavatory drain couplings. Fitting end—hose connection accepts standard 4” lavatory drain hose.
V2651D516L02	-64	Lavatory drain	Nipple mates and seals with all lavatory drain couplings. External NPT fitting end for 4” ball valve connection. Assures a triple redundant seal which includes: ball valve, drain plug, and cap cover seal.

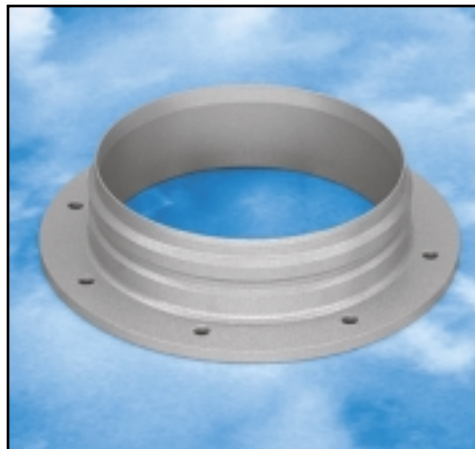


V2651D516L02 shown

NIPPLE—COUPLING STOWAGE POINT— FOR ALL STYLE LAVATORY DRAIN COUPLINGS

Notes:

- Lavatory drain coupling stowage point nipple.
- Flange incorporates 8 mounting bolt holes.
- Not intended for operational fluid service (not pressure rated).
- Will not accept drain plugs and is not intended as a lavatory system, or service truck drain connection.



V2651-015A00 shown

AIRLINX P/N	Size	Material	Application	Specifications
V2651-015A00	-64	Cast aluminum alloy	Lavatory service	A quick connect, drain coupling stowage point on the lavatory service truck/cart.
V2651-216C01	-64	Stainless steel	Lavatory service	A quick connect, drain coupling stowage point on the lavatory service truck/cart.

CAP, TURN-TO-LOCK— FOR LAVATORY DRAIN NIPPLE OUTLET

Notes:

- Lavatory service drain cap (standard version).
- Component materials:
 Ballcage—Cast aluminum alloy.
 Cover—Aluminum alloy.
 Seal—Nitrile.
- Nominal pressure rating, 25 PSIG.

AIRLINX P/N	Size	Specifications
V2651J126A00	-64	4" drain cap assembly. For use on aircraft lavatory drain nipple assemblies or lavatory ground support truck/cart drain nipple outlet.
V2651J126A10	-64	V2651J126A00 cap with 6" long safety chain assembly. Includes NAS1455 flat link chain, snap-swivel, and 2 NAS1090-2 "S" hooks.



V2651J126A00 shown

CAP—TURN-TO-LOCK, WITH DRAIN VALVE—FOR LAVATORY DRAIN NIPPLE OUTLET

Notes:

- Lavatory service drain cap (special).
- Component materials:
 Ballcage—Cast aluminum alloy.
 Cover—Aluminum alloy.
 Seal—Nitrile.
- Incorporates a visual positive lock, color coded indicator.
- Nominal pressure rating, 25 PSIG.



V2651J196A00 shown

AIRLINX P/N	Size	Specifications
V2651J154A00	-64	4" drain cap assembly with drain valve. For use on aircraft lavatory drain nipple assemblies or lavatory ground support truck/cart drain nipple outlet.
V2651J162A00	-64	Identical to V2651J154A00 less drain valve. Adaptable into other versions with special chain.
V2651J196A00*	-64	V2651J154A00 cap with 6" long safety chain assembly. Includes NAS1455 flat link chain, snap-swivel, and 2 NAS1090-2 "S" hooks.

*Part No. V2651J196A00 is approved for government procurement, NSN 4730-00-965-8564

PNEUMATIC COUPLING FOR ENGINE AIR STARTING AND AIR-CONDITIONING POWER—SIZE -56 (BUTTERFLY HANDLE)

Notes:

- Component materials:
Exterior—Steel.
Interior—Stainless steel/Aluminum alloys.
“O” Ring—Silicone. FDA approved.
- Coupling mates and seals on engine start nipple (MS33740).
- Stainless steel “clam shell” design closes automatically on disengagement.
- “Push to engage”-“Push & Pull to release” action.
- 12 engagement/contact balls.
- Overhaul manual V7950-BM-().

Patent No.: 4,586,694

AIRLINX P/N	Specifications
V7950-BM-154	Pneumatic engine air start coupling—basic with 3 3/8-12 UN2A fitting end—thread connection.
V7950-BM-114	Pneumatic engine air start coupling assembly with size -56 fitting end—hose connection.
V7950-BM-124	Pneumatic engine air start coupling assembly with 3 1/2" NPT fitting end.
V7950-BM-134	Pneumatic engine air start coupling assembly with fitting end—flange type connection.
V7950-BM-144	Pneumatic engine air start coupling assembly with fitting end—flange/hose connection.

1. Add -01 to the assembly part numbers to include 1/4" wire mesh screen.
2. Wire mesh screen part number: 190-2009-051. Adaptable to all air start couplings.



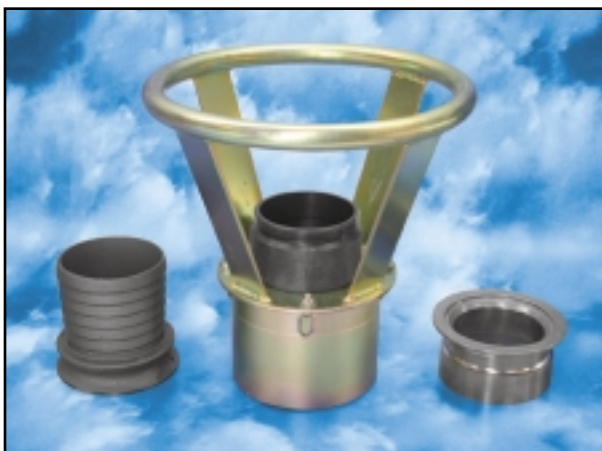
V7950-BM-154 shown. Left: -114 connector, Right: -134 connector

PNEUMATIC COUPLING FOR ENGINE AIR STARTING AND AIR-CONDITIONING POWER—SIZE -56 (ROUND HANDLE)

Notes:

- Component materials:
Exterior—Steel.
Interior—Stainless steel/Aluminum alloys.
“O” Ring—Silicone. FDA approved.
- Coupling mates and seals on engine start nipple (MS33740).
- Stainless steel “clam shell” design closes automatically on disengagement.
- “Push to engage”-“Push & Pull to release” action.
- 12 engagement/contact balls.
- Overhaul manual V7950-RH-().

Patent No.: 4,586,694



V7950-RH-154 shown. Left: -114 connector, Right: -134 connector

AIRLINX P/N	Specifications
V7950-RH-154	Pneumatic engine air start coupling—basic with 3 3/8-12 UN2A fitting end—thread connection.
V7950-RH-114	Pneumatic engine air start coupling assembly with size -56 fitting end—hose connection.
V7950-RH-124	Pneumatic engine air start coupling assembly with 3 1/2" NPT fitting end.
V7950-RH-134	Pneumatic engine air start coupling assembly with fitting end—flange type connection.
V7950-RH-144	Pneumatic engine air start coupling assembly with fitting end—flange/hose connection.

1. Add -01 to the assembly part numbers to include 1/4" wire mesh screen.
2. Wire mesh screen part number: 190-2009-051. Adaptable to all air start couplings.

PNEUMATIC “Y” START ADAPTER WITH BUILT-IN “CLAM-CHECK” ANTI-BACK FLOW DEFLECTORS, FOR ENGINE AIR STARTING

Weights less than 10 lbs. (4.5 kg)

Notes:

- Uses two auxiliary ground power jet start sources to start one aircraft.
- Material—All Stainless steel.
- Optional end fitting attachment allows for customized air start hose/air start coupling attachment.
- Replaceable MS33740 nipples.

Patent No.: 4,586,694

AIRLINX P/N	Specifications
V7950-BM-039*	3 1/2" fitting end-hose connection inlets, "V" band fitting end-flange connection outlet.
V7950-BM-040	3 1/2" fitting end-hose connection inlets, 3 1/2" fitting end-hose connection outlet.
V7950-BM-041	3 1/2" fitting end-MS33740 nipple inlets, "V" band fitting end-flange connection outlet.
V7950-BM-042	3 1/2" fitting end-MS33740 nipple inlets, 3 1/2" fitting end-hose connection outlet.

*Use with AIRLINX air start coupling V7950-BM-134-01, or equivalent.



V7950-BM-041 shown



V2651-BM-005 shown

AIR START HOSE REPAIR KIT & AIR START HOSE/COUPLING CONNECTORS

Notes:

- Used for repair of standard 3 1/2" air start hose.
- Can be used to extend length of hose, where increased durability is required.
- Splice tube material—Stainless steel.
- Band-it clamps (4) material—Stainless steel.
- 18" long scuff cover with cuffs (outer protection).
- Clamp installation tool required.

AIRLINX P/N	Size	Specifications
V2651-BM-005	-56	Used for repairing or extending pneumatic air start hose. Assembly includes (1) 190-1020-151 splice tube, (4) 990-0028-060 clamps, and (1) 990-0028-068 scuff guard.
V7950-BM-001	-56	Air start adapter-hose fitting-to-nipple. Standard 3 1/2" fitting end-hose connection to MS33740 nipple.
V7950-BM-002	-56	Air start nipple union adapter-nipple-to-nipple. MS33740 nipple fittings both ends.
V7950-BM-003	-56	Air start adapter-"V" band flange-to-nipple. Standard 4 1/2" "V" band fitting end-flange connection to MS33740 nipple.
V7950-BM-004	-56	Air start adapter-"V" band flange-to-hose fitting. Standard 4 1/2" "V" band fitting end-flange connection to standard 3 1/2" fitting end-hose connection.

**COUPLING WITH POPPET VALVE—
PUSH-PULL TYPE WITH MATING DUST
COVER PLUG. FOR USE ON OIL FILLER
GROUND SERVICE CART.**

Notes:

- Coupling mates and seals with APU/CSD oil tank and jet engine oil tank fill nipples.
- “O” Ring material complies with MIL-R-83248.
- Automatically opens the valve for a nominal flow rate of 3.5 GPM, MIL-L-7808 oil or equivalent.
- Maximum poppet leakage when disconnected @ 0-100 PSIG is .06 cc/hr.
- Nominal pressure rating, 100 PSIG.

AIRLINX P/N	Size	Description	Material	Specifications
V2506J06-002	-06	Coupling-Engine/ CSD Fill	Ballcage-Stainless steel Poppet-Stainless steel Collar-Stainless steel	Coupling with MS33656-6, style “E” fitting end-thread connection.
V2506J06-003	-06	Coupling-Engine/ CSD Fill	Ballcage-Aluminum alloy Poppet-Stainless steel Collar-Stainless steel	Coupling with MS33656-6, style “E” fitting end-thread connection.
V2506-06-005	-06	Dust plug for V2506J06-002/3	Aluminum alloy	Bead chain: NAS1201, 5 1/2” long with NAS1090-1 “S” hook.
V2505J08-002	-08	Coupling-Engine/ CSD Overflow	Ballcage-Stainless steel Poppet-Stainless steel Collar-Stainless steel	Coupling with MS33656-8, style “E” fitting end-thread connection.
V2505J08-003	-08	Coupling-Engine/ CSD Overflow	Ballcage-Aluminum alloy Poppet-Stainless steel Collar-Stainless steel	Coupling with MS33656-8, style “E” fitting end-thread connection.
V2505-08-005	-08	Dust plug for V2505J08-002/3	Aluminum alloy	Bead chain: NAS1201, 5 1/2” long with NAS1090-1 “S” hook.



V2506J06-003 coupling / V2506-06-005 plug shown

BREAKAWAY COUPLING– RECONNECTABLE, 100 LB. RATED

Notes:

- For potable water, lavatory service fill lines.
- Component materials:
 Ballcages–Aluminum alloy.
 Locking collar–Aluminum alloy.
 Balls, locking pins, springs, retaining ring,
 and washer–Stainless steel.
 “O” Ring–Nitrile.
- Fully reconnectable.
- No kits, tools, or replacement parts are
 required for reassembly.
- 100 lb. rated “pull” breakaway force.
- 12-15 lb. rated “push” reconnection force.
- Built in surge protection.
- Maximum flow rating–low pressure drop.
- Patent pending.

AIRLINX P/N	Size	Application	Description	Specifications
V0030J012A01	-12	Potable water	Lightweight, 3-piece reconnectable design incorporates male/female ballcage halves, and an outer locking collar.	3/4" breakaway coupling with MS33658-12 fitting end–hose connections.
V0030J016A01	-16	Lavatory service	Lightweight, 3-piece reconnectable design incorporates male/female ballcage halves, and an outer locking collar.	1" breakaway coupling with MS33658-16 fitting end–hose connections.



V0030J016A01 shown